



SCREEN

TMX-2050

The TMX-2050 display™ is an advanced multitouch monitor that is installed in the cabin, runs on the Android operating system™ and seamlessly integrates into your operation. The intuitive interface makes it easy to implement precision farming solutions for both advanced users and newcomers. The easy-to-use TMX-2050 display goes beyond traditional precision farming functions and offers real farm management tools right in the cab.

BENEFITS OF AGRICULTURE OF PRECISION

- ▶ Manual guidance, registration and control of virtual sections
- ▶ Compatibility with Trimble auto steering systems®
- ▶ Automatic headland turning technology NextSwath™ that optimizes the rotation of the implement in the next pass
- ▶ Automatic dose and section control with the Field-IQ system™ and several industry leading protocols
- ▶ ISOBUS virtual terminal for variable rate application control and implement section control
- ▶ Wireless data exchange between the field and the office

MOBILE APPS LOCAL

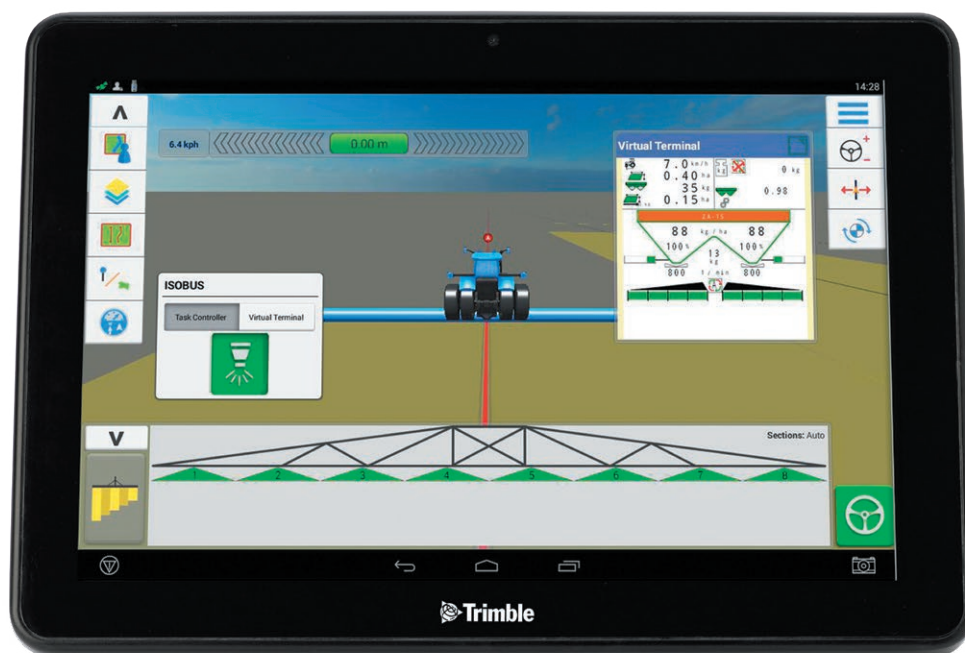
The TMX-2050 display has mobile apps specially designed for the work you need to do. The Android operating system offers you stability and reliability in the same environment used by your current mobile devices. You will be able to access a list of useful applications such as TeamViewer, CoPilot, and many others from local manufacturers or software companies.

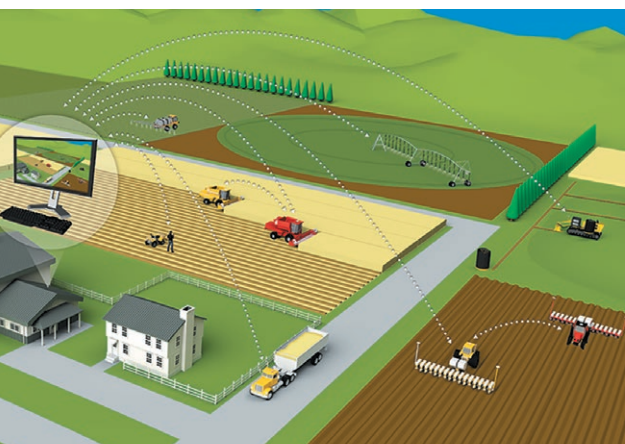
TRANSFER OF DATA EFFECTIVE IN THE WHOLE ESTABLISHMENT AGRICULTURAL

The TMX-2050 display gives you immediate access to the Connected Farm suite of applications™, where you can see all your data and your farming operations directly from the cab of the machine. Share data wirelessly between vehicles, or transfer information between the field and the office in real time, and provide your operators with up-to-date, consistent maps and guide lines.

Main Features

- ▶ Large 31.2 cm high-definition color touch screen
- ▶ Tailored tablet-like interface similar to your other mobile devices
- ▶ You will be able to choose from several configurations with Precision-IQ™ and FmX display software®
- ▶ Android platform, allowing you to be prepared for the future
- ▶ Robust construction for daily work in the field
- ▶ An integrated camera compatible with additional external camera
- ▶ Easy to transfer between vehicles





E CONFIGURATIONS AND SOFTWARE

and the screen software that best suits your needs to:

50 with the Precision-IQ app

e Precision-IQ provides a streamlined workflow with , specifically designed for today's leading farmer. latest connectivity platform with auto-guided ridges for variable rate application such as ISO and

50 with Precision-IQ and FmXPlus apps

ity with the additional features of FmX Plus, including mentos, automatic headland turns, performance leveling. Take advantage of the same wire flows as the integrated Trimble FmX display and benefit from faster connections without having to learn new ones

s of software or having to take training courses.

CONNECTED FARM TIONS

TMX-2050 gives you instant access to the Connected Farm Dashboard: a central hub where you can see the farm-related information you care about.

local weather forecasts and recent rainfall totals from your farms so you know if you need to irrigate, or apply other inputs
 Check fuel level, oil pressure, battery life and gnostics of the vehicles in your fleet
 Track machine locations and condition, fixed status, and productivity lags across the entire fleet
 pivot irrigation systems and monitor the status of the equipment from the cab

- ▶ Locate other vehicle operators to see if they are idle, working, or commuting between jobs
- ▶ View maps of farming operations as they are completed in the field

AVAILABLE ACCURACY LEVELS

Choose the level of accuracy that's right for your farming operation. Trimble provides you with high-performance correction service options that range from basic accuracy levels to high-accuracy levels, and offer a variety of ways to receive corrections. These options are ideal for virtually any location, crop type, field shape, or soil type.

CenterPoint Correction Services®RTX and RangePoint™Trimble RTX provide significant performance advantages to the guidance display, increasing the accuracy, performance and profitability of farming operations. Also, Trimble xFill technology™allows you to continue receiving RTK corrections and accurate positioning data when the radio link or internet connection is lost.

Benefit from unprecedented reliability and uptime no matter where you are.

Center Point RTK < 2.5cm accuracy	Center Point RSV™ < 2.5cm accuracy	Center Point RTX 3.8cm accuracy	RangePoint RTX < 15cm accuracy	SBAS (EGNOS) 15-20cm accuracy
--------------------------------------	---------------------------------------	------------------------------------	-----------------------------------	----------------------------------

Agrionix SA
 Parana Country Club
 Hernandarias - Paraguay
 + 595 985 401000
 vantage@agrionixsa.com
 www.agrionixsa.com

Contact your dealer today Trimble Ag

NORTH AMERICA
 Trimble Agriculture Division
 10368 Westmoor Drive
 Westminster, CO 80021
 U.S.
 + 1-720-887-6100 Phone
 + 1-720-887-6101 Fax

Trimble Inc.
 Corporate Headquarters
 935 Stewart Drive
 Sunnyvale, CA 94085
 U.S.
 + 1-408-481-8000 Phone
 + 1-408-481-7740 Fax

EUROPE
 Trimble Germany GmbH
 Am Prime Parc 11
 65479 Raunheim
 GERMANY
 + 49-6142-2100-0 Telephone
 + 49-6142-2100-140 Fax

